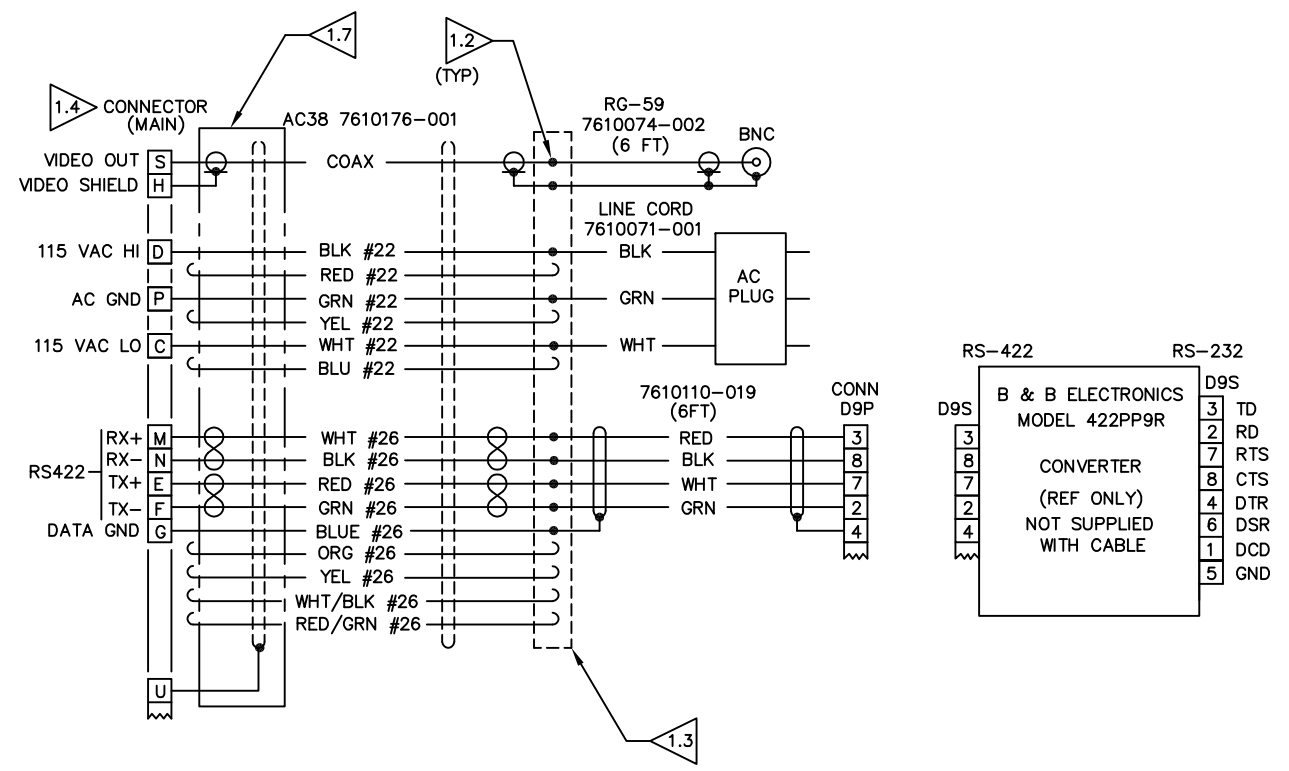
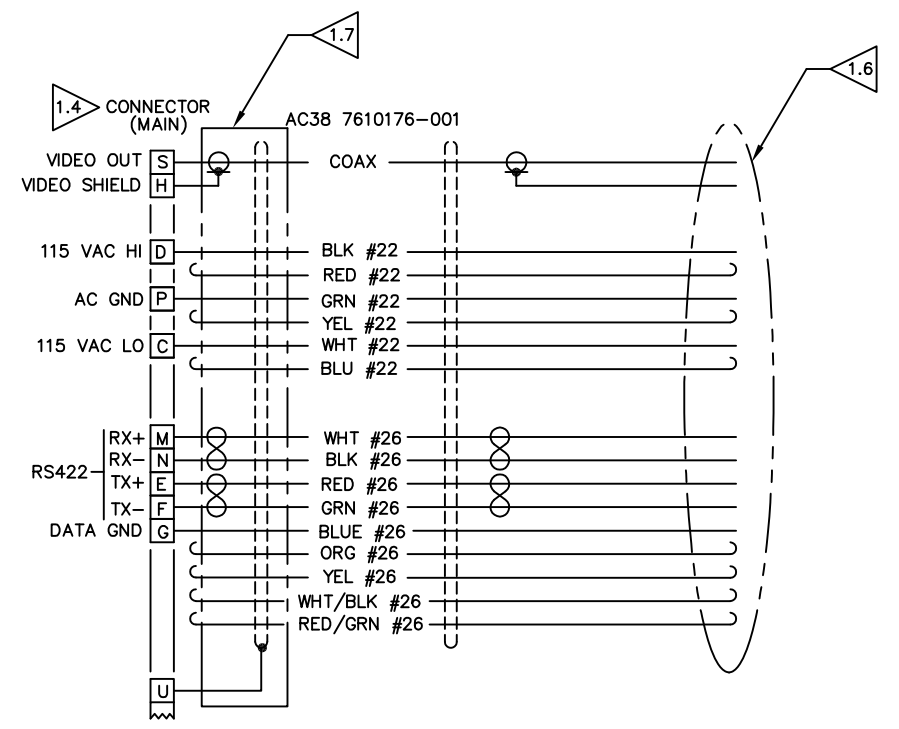


REVISIONS				
ZONE	LTR	DESCRIPTION	DATE	APPROVED
	A	REDRAWN - REVISED PIN NO'S AT CONNECTOR D9P & D9S FOR RS-422 CONVERTER. ECN H995	01-17-03 M.C.	N.T.
C5 C4	B	AT CABLE 7610110-019 RED WIRE WAS WHT, WHT WIRE WAS RED. ADDED "B & B....." TO CONVERTER. ECN J064	04-02-03 M.C.	N.T.
A8	C	ADDED NOTE 4. ECN J100	5-5-03 J.K.	N.T.
D6 D5 A8	D	AC38 7610176-001 WAS AC33 7610129-001, RG-59 7610074-002 WAS RG174/U 7610093-001. IN NOTE 1, CABLE LENGTH WAS 250 FT. ECN J755	3-23-05 M.C.	N.T.
B5	E	IN TABLE CA298A BNC CONNECTOR 1310212-003 WAS 1310212-004. ECN J802	06-31-05 M.C.	N.T.
	F	CHANGE BORDER FORMAT. REVISED NOTES. ADDED ACCESSORY 1310216-013 TO CA298A. ADDED CA298M. ECO 030625	5-04-10 M.C.	K.L.
	G	ADDED NOTES 1.6, 1.7 & DETAIL "A". ADDED SHEET 2 CA298E. (MOVED CA298M TO SHEET 2). ECO 031385	9-28-12 M.C.	M.N.



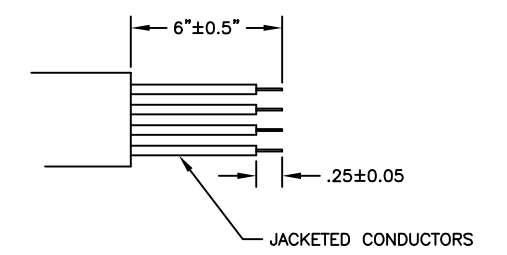
CA298A

CA 298	CONNECTOR (MAIN)	ACCESSORY	CONNECTOR (BNC)	ACCESSORY	CONNECTOR (D9P)	ACCESSORY
A	1310230-011	1310216-013	1310212-003	-	1310136-003	1310341-009 (HOOD)



CA298E

CA 298	CONNECTOR (MAIN)	ACCESSORY	CONNECTOR (BNC)	CONNECTOR RJ45
E	1310230-011	-	-	-



DETAIL "A"

WIRE TERMINATION

- 1.7 IDENTIFY WITH THE 'CAxxxx' CABLE NUMBER AS INDICATED IN THIS DRAWING, THE REVISION OF THIS DRAWING, AND THE SPECIFIED CABLE LENGTH APPROX. WHERE SHOWN.
- 1.6 STRIP OUTER JACKET BACK 6" ±.5". STRIP INDIVIDUAL CONDUCTORS .25"±.05" AND TIN WIRE AS REQUIRED BY SCHEMATIC. DO NOT STRIP COAX. UNUSED WIRE TO BE CUT FLUSH WITH OUTER JACKET AND COVERED BY HEAT SHRINK IF REQUIRED. SEE DETAIL A.
- 1.5 CABLE CA BE USED ON 230V UNITS.
- 1.4 POT MAIN CONNECTOR PER MM-81.
- 1.3 INSTALL OVEALL SHRINK TUBING.
- 1.2 INSTALL SHRINK TUBING OVER EACH SPLICED SOLDER JOINT.
- 1.1 MAX. CABLE LENGTH: 750 FT.

NOTES: UNLESS OTHERWISE SPECIFIED

UNLESS OTHERWISE SPECIFIED, DIMENSIONS ARE IN INCHES. DIMENSIONS IN () ARE METRIC (mm). TOLERANCES ARE:		DRAFTER M.C. 09-10-02		ELECTRONICS DIVISION	
INCHES: .00 ±.03 (0.0) ±1.0 ±0° 30'		CHECKER N.T.		SAN DIEGO CALIFORNIA	
MILLIMETERS: .000 ±.000 (0.00) ±0.25		APPD	CABLE ASSEMBLY, 3935 CAMERA CONTROL (115VAC) CA298		
ANGLES: ±0° 30'		APPD N.T.			
HOLE TOLERANCES:		RELEASE ECN H912			
INCHES: .013 THRU +.004 (-.20) THRU +.10		DO NOT SCALE DRAWING			
.125 -.001 (3.20) -.02			SIZE	CODE IDENT NO.	
.126 THRU +.008 (3.21) THRU +.13			D	05157	7411298
.250 -.001 (6.35) -.02					
.251 THRU +.006 (6.36) THRU +.16					
.500 -.001 (12.70) -.02					
.501 THRU +.008 (12.71) THRU +.20					
.750 -.001 (20.0) -.02					
REF	7411996	MATERIAL			
DASH	REQD	NEXT ASSEMBLY	FINISH	SCALE NONE	SHEET 1 OF 2

8 7 6 5 4 3 2 1

D

D

C

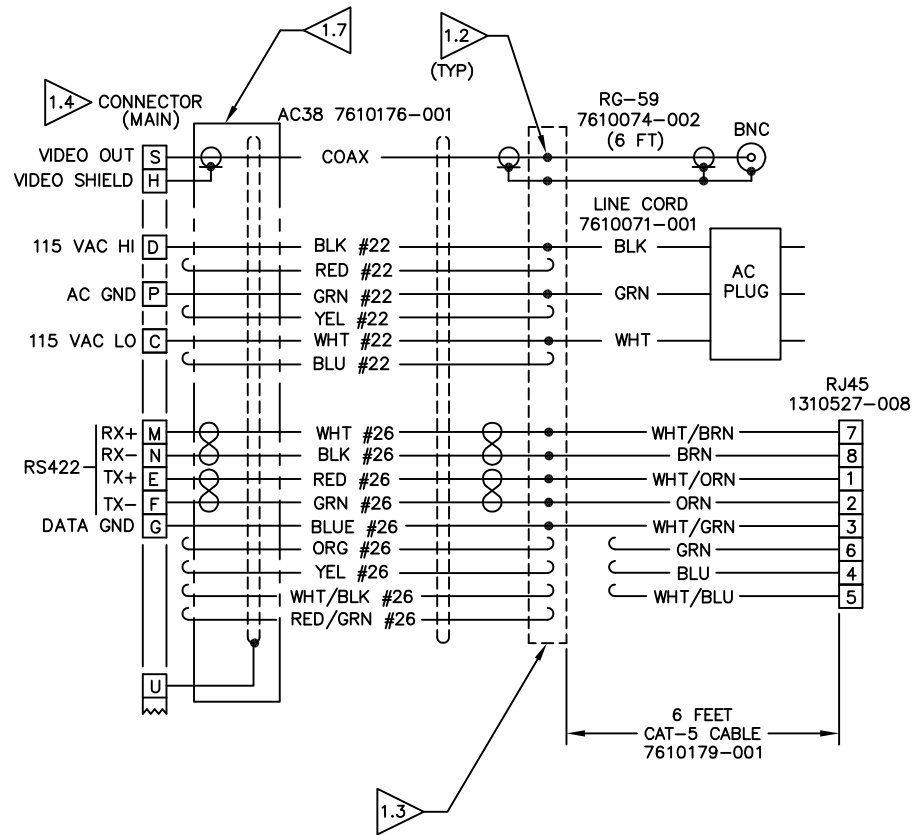
C

B

B

A

A



CA298M

CA 298	CONNECTOR (MAIN)	ACCESSORY	CONNECTOR (BNC)	CONNECTOR RJ45
M	1310230-011	1310216-013	1310212-003	1310527-008

UNLESS OTHERWISE SPECIFIED, DIMENSIONS ARE IN INCHES. DIMENSIONS IN () ARE METRIC (mm).		DRAFTER M.C. 09-10-02	ELECTRONICS DIVISION SAN DIEGO CALIFORNIA
TOLERANCES ARE:		CHECKER N.T.	
INCHES	±.03	(0.0) ±1.0	APPD
MILLIMETERS	±.000	(0.00) ±0.25	APPD N.T.
ANGLES		±0° 30'	RELEASE ECN H912
DO NOT SCALE DRAWING			
REF	7411996		
DASH	REQD	NEXT ASSEMBLY	
FINISH			
SIZE	CODE IDENT NO.	7411298	G
D	05157		
SCALE	NONE	SHEET 2 OF 2	REV