


**NOTES: UNLESS OTHERWISE SPECIFIED**

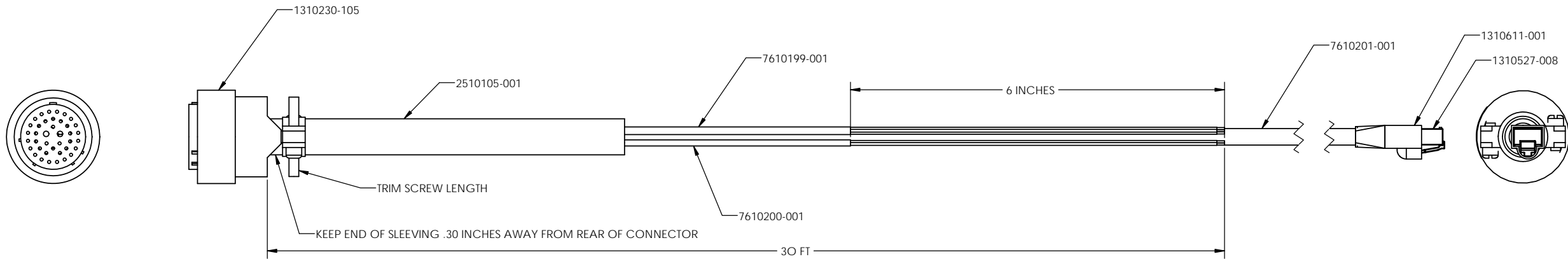
1. MARK CONNECTORS WITH REFERENCE DESIGNATORS AT INSTALLATION.
2. TOLERANCE FOR THE WIRES: +0.50/-0.00.
3. IDENTIFY CABLE WITH PART NUMBER AND REVISION APPROX. WHERE SHOWN.
4. MUST BE ROHS COMPLIANT.

5. FINISHED ASSEMBLY SHALL CONFORM TO IPC/WHMA-A-620 CLASS 2.

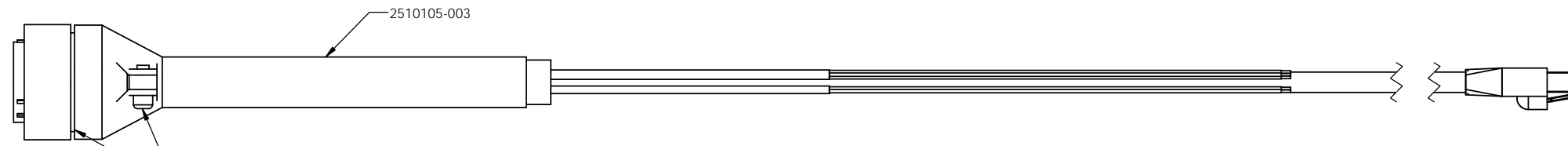
6. ALL CHANGES IN PART SOURCING MUST BE APPROVED BY COHU ELECTRONICS.

 ATTACH CABLE DRAIN WIRES TO PIN L USING #20 BLUE WIRE. SEE DETAIL A.

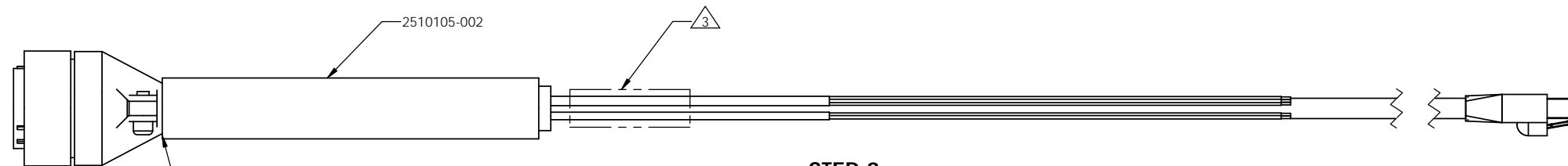
REVISIONS				
ZONE	REV.	DESCRIPTION	DATE	APPROVED
	Z1	INITIAL RELEASE	1/29/2013 JT	RDL
	A	ADDED HEAT SHRINK TO EDGE OF STRIPPED BACK AREA. ADDED .002 HEATSHRINK OVER TOP OF .003. CHANGED MAX LENGTH OF "A" PART FROM 300 FT TO 328 FT. CHANGED GRN TO BLK AND BLK TO GRN ON SCHEMATIC SHEETS.	7/24/2013 RDL	RDL
	B	CORRECTIONS MISSED WHEN UPDATING COLORS ON ECO 031548	8/30/2013 RDL	RDL
	C	ADDED LABELING NOTES AND CORRECTED SPELLING IN NOTES.	9/13/2013 RDL	RDL
	D	BORDER UPDATE TO COHU HD COSTAR LOGO. SH3 & SH4: MAIN CONNECTOR. REVISED HOST A,B,C,D "FROM CAMERA" AND "TO CAMERA" SIGNALS. ECO 032035	2/23/2015	DD
	E	SH3: REVISED BELDEN 1033A & BELDEN 5202FT WIRE TERMINATION NOTE. ECO 032222	10/28/2015	RDL



**STEP 1**



**STEP 2**



**STEP 3**

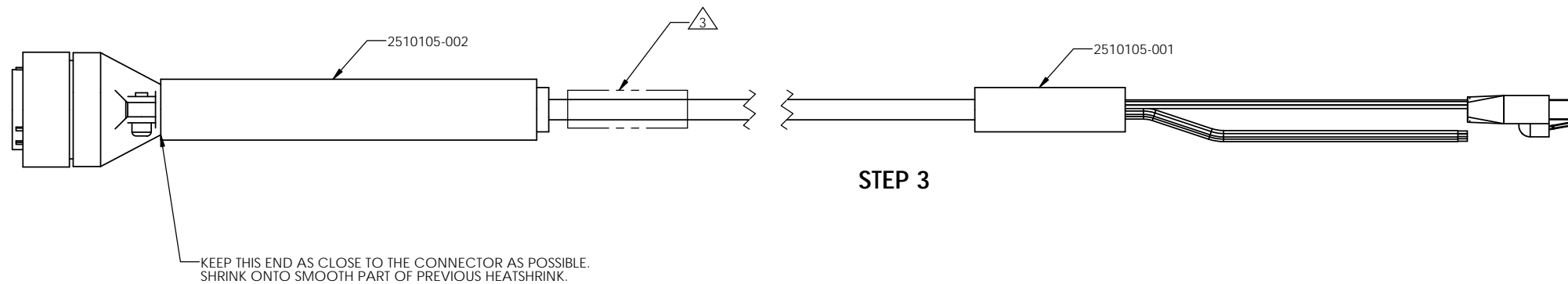
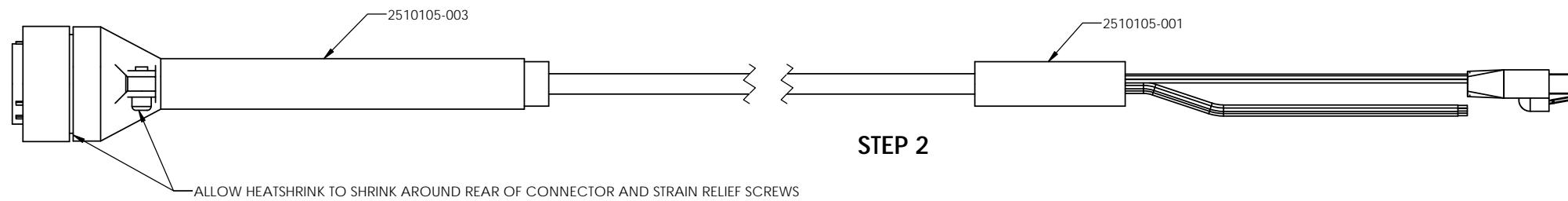
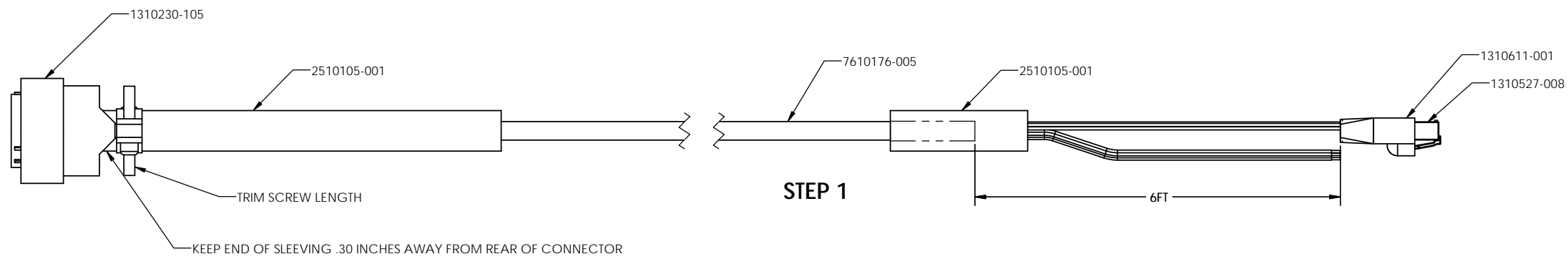
**CA288A**

UNLESS OTHERWISE SPECIFIED DIMENSIONS ARE IN INCHES DIMENSIONS IN ( ) ARE METRIC (mm)			DRAFTER RDL 1-4-2013	
TOLERANCES ARE			CHECKER	
INCHES	MILLIMETERS	ANGLES	APPD	
.00 ±.01	(0.0) ±0.25	±0° 30'	APPD	
.000 ±.005	(0.00) ±0.13		RELEASE	
DO NOT SCALE DRAWING			SIZE CODE IDENT NO. REV	
DASH REQD NEXT ASSEMBLY			D 05157 7411288 E	
MATERIAL FINISH NOTED			SCALE: 1:1 SHEET 1 OF 4	
HOLE TOLERANCES				
INCHES	MILLIMETERS			
.013 THRU +.004	(.30)	THRU +.10		
.125 -.001	(3.20)	-.02		
.126 THRU +.005	(3.21)	THRU +.13		
.250 -.001	(6.35)	-.02		
.251 THRU +.006	(6.36)	THRU +.16		
.500 -.001	(12.70)	-.02		
.501 THRU +.008	(12.71)	THRU +.20		
.750 -.001	(20.0)	-.02		



8800HD CAMERA CABLE  
CA288

8 7 6 5 4 3 2 1



**CA288B**

**COHU**  
**HDICOSTAR**

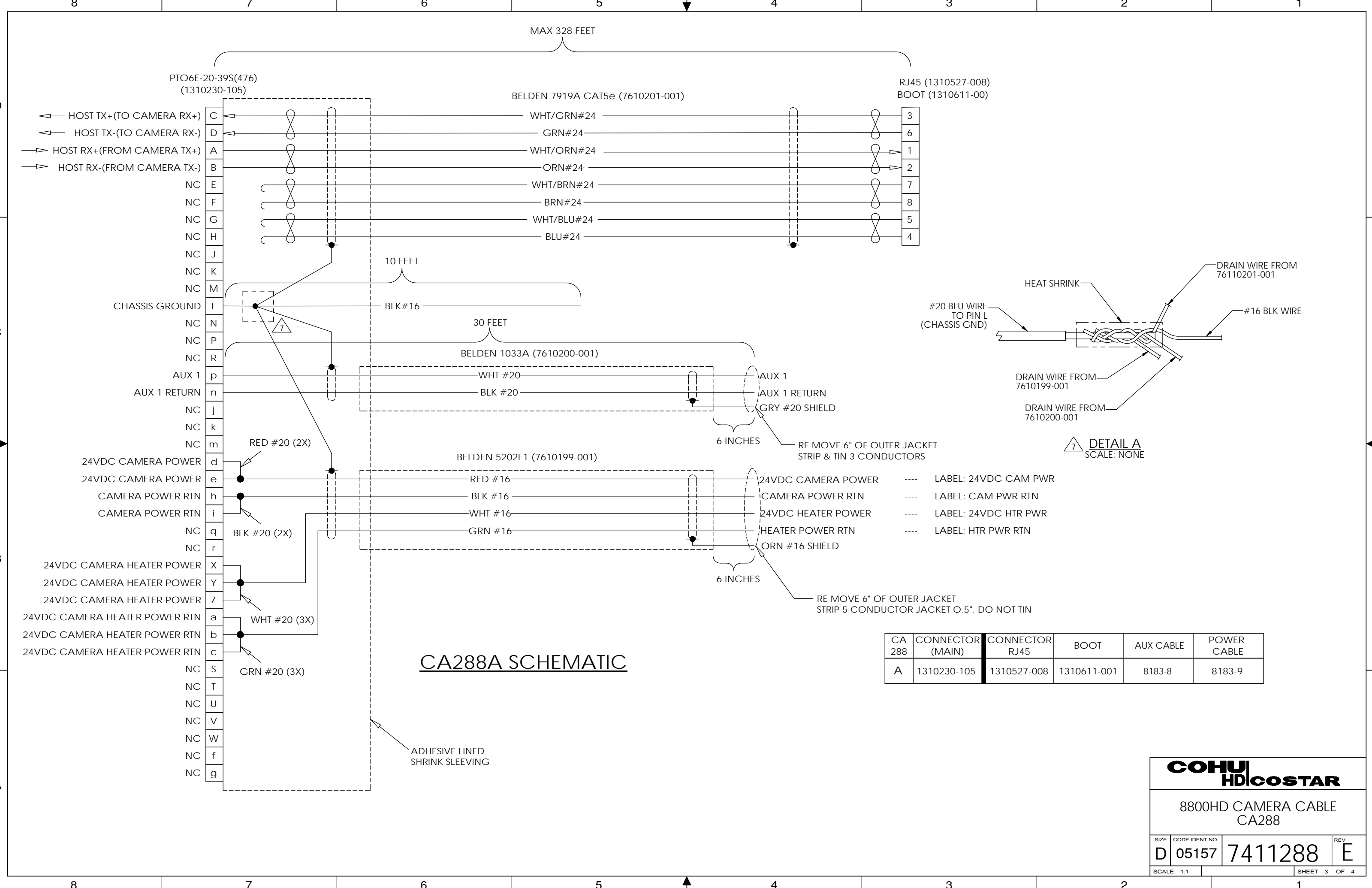
8800HD CAMERA CABLE  
CA288

SIZE	CODE IDENT NO.	REV
D	05157	E
7411288		

SCALE: 1:2

SHEET 2 OF 4

8 7 6 5 4 3 2 1



**COHU HD|COSTAR**

8800HD CAMERA CABLE  
CA288

SIZE	CODE IDENT NO.	REV
D	05157	E

SCALE: 1:1 SHEET 3 OF 4

MAX 90 FEET  
AC42 (7610176-005)  
6 FEET

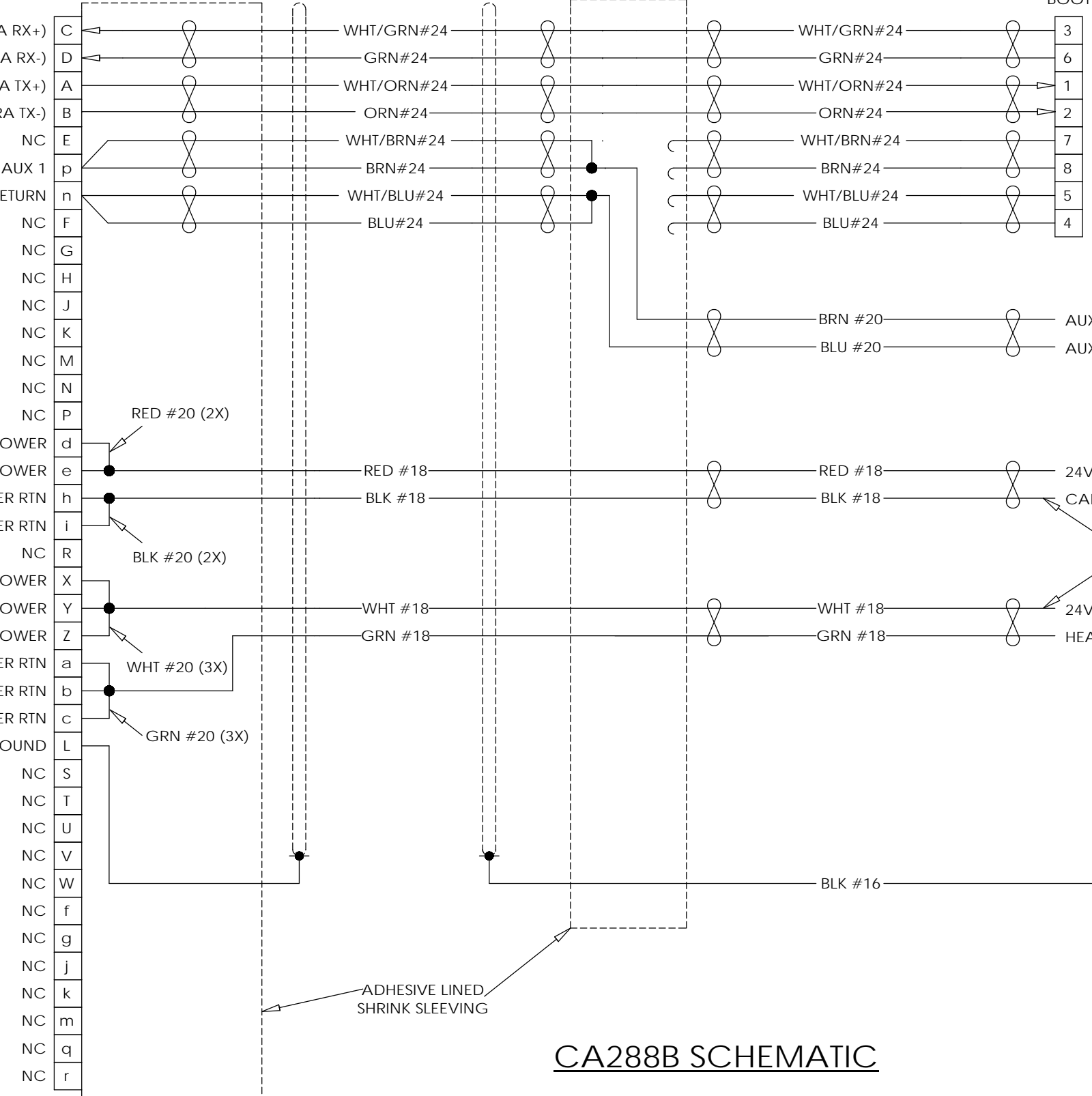
PTO6E-20-39(476)  
(1310230-105)

RJ45 (1310527-008)  
BOOT (1310611-001)

← HOST TX+(TO CAMERA RX+)  
← HOST TX-(TO CAMERA RX-)  
→ HOST RX+(FROM CAMERA TX+)  
→ HOST RX-(FROM CAMERA TX-)

NC C  
AUX 1 D  
AUX 1 RETURN E  
NC F  
NC G  
NC H  
NC J  
NC K  
NC M  
NC N  
NC P

24VDC CAMERA POWER d  
24VDC CAMERA POWER e  
CAMERA POWER RTN h  
CAMERA POWER RTN i  
NC R  
24VDC CAMERA HEATER POWER X  
24VDC CAMERA HEATER POWER Y  
24VDC CAMERA HEATER POWER Z  
24VDC CAMERA HEATER POWER RTN a  
24VDC CAMERA HEATER POWER RTN b  
24VDC CAMERA HEATER POWER RTN c  
OVERALL SHIELD/CHASSIS GROUND L



RED #20 (2X)

BLK #20 (2X)

WHT #20 (3X)

GRN #20 (3X)

ADHESIVE LINED  
SHRINK SLEEVING

3  
6  
1  
2  
7  
8  
5  
4

AUX 1  
AUX 1 RETURN

24VDC CAMERA POWER --- LABEL: 24VDC CAM PWR  
CAMERA POWER RTN --- LABEL: CAM PWR RTN

STRIP CONDUCTOR JACKET 0.5". DO NOT TIN  
24VDC HEATER POWER --- LABEL: 24VDC PLATFORM PWR  
HEATER POWER RTN --- LABEL: PLATFORM PWR RTN

CA 288	CONNECTOR (MAIN)	CONNECTOR RJ45	SHRINK SLEEVE BOOT
B	1310230-105	1310527-008	1310611-001

**CA288B SCHEMATIC**

**COHU HD COSTAR**

8800HD CAMERA CABLE  
CA288

SIZE	CODE IDENT NO.	REV
D	05157	E

SCALE: 1:1 SHEET 4 OF 4