













































**Table 7. DPS3600 “Home” Screen**

FUNCTION AREA		
NAME	EFFECT	
<b>Misc</b>		
Lens/Aperture	Opens new screen for either lens iris setup or aperture conditions	
Set AE Windows	Opens new screen for setting gain control windows size and locations	
<b>About</b>		
About Cohu 3600	Opens new window identifying program and version level	
<b>BLC (Back Light Compensation)</b>		
Off	Windowed fixed weighting (5 areas) [Fixed Weighted Average]	
Auto Weighted Average	Windowed automatic weighting	
Brightens dark areas	Brightens Dark Areas of Image	
Darkens bright areas	Darkens Bright Areas of Image	
<b>Ext Sync</b>		
Comp	Conditions the camera for the composite as the external sync input (special order cameras only)	
HDVD	Conditions the camera for horizontal drive & vertical drive as the external sync input	
<b>Gamma (figures 17 and 18)</b>		
Preset	0, 1, 2, 3, 4, 5, 6, 7, 8, or 9 can be selected (0 is least curve amount of curve, 7 is maximum curve). Gamma 8 is standard linear response. Gamma 9 is a linear response but with about 15% increased output — at the expense of additional noise	
<b>AWB (Auto White Balance)</b>		
Auto	Camera automatically adjusts white balance response curve	
Manual	Up / Down buttons adjust white balance response curve manually	
User	Activates red (top) and blue (bottom) sliders to right	Red slider changes red response curve
		Blue slider changes blue response curve
<b>Exposure</b>		
Gain	Auto / manual selectable	In manual: 0 through 7 selectable; in Auto, maximum AGC Max selection to right is activated
AGC Max	Selectable 1 to 255	Limits the maximum amount of available gain increase when in Auto mode. 1 is min, 224 is a nominal setting, 255 is max available
Shutter	Auto / manual selectable	In manual: 1/50, 1/100, 1/250, 1/500, 1/1,000 1/2,000 1/4,000, 1/10,000, 1/20,000, 1/50,000 sec
Integration	Off / on selectable.	2, 3, 4, 5, 10, 20, 40, 80, 160, 320, 510 fields available when On selected. Manual Integration only available with gains, shutter & lens in manual mode.
<b>Effects</b>		
Horizontal Flip	Swaps the left and right of scene (not top and bottom)	
Vertical Flip	Swaps the top and bottom of scene (not left and right)	
180° Rotate	Rotates scene so top right becomes bottom left	
Freeze	Captures the current scene and continues to output it	
Y-Invert	Inverts the luminance signal	
C-Invert	Inverts the chroma signal	
Color Bars	Provides color bars at the output	
Monochrome	Removes chroma from the output	
<i>Continued on next page</i>		

<b>Table 7 (continued)</b>		
<b>FUNCTION AREA</b>		
<b>NAME</b>	<b>EFFECT</b>	
<b>Effects (continued)</b>		
Zoom Control	1x	Removes any digital zoom in effect
	In	Digitally zooms in
	Out	Digitally zooms out
	Tilt up button	Moves up in the scene
	Tilt down button	Moves down in the scene
	Pan right button	Moves right in the scene
	Pan left button	Moves left in the scene
	Center button	Returns to the center of the scene
<b>Presets</b>		
Preset drop down menu	Choose from factory default or presets 1 through 7	
Save	Saves preset 1 through 7 settings	
EEPROM	Saves current entries to the eeprom - becomes Camera power up default	
<b>Message and COM Area</b>		
Transmit Indicator and transmit data line	Indicator lights when data is being transmitted and hex code of data sent is shown	
Receive Indicator and data receive line	Indicator lights when data is being received and hex code of data sent is shown	
COM	Select from COM1 through COM3	
Close	Closes the DSP3600 screen	
<i>end</i>		

Most other semiconductors fall between TTL and CMOS in susceptibility to static discharge. As a minimum, therefore, observe the following practices when working inside this or any other electronic equipment:

1. Use conductive sheet stock on the work bench surface.
2. Connect the sheet stock to ground through an 1 megohm or greater value resistor.
3. Use a wrist strap connected to ground through an 1 megohm or greater value resistor when working at the bench.
4. Maintain relative humidity of the room above 30 percent. This may require a room humidifier. Working on circuits with relative humidity below 30 percent requires extraordinary procedures not listed here.
5. Use antistatic bags to store and transport an

exposes chassis, circuit boards, and components. Use new antistatic bags. Old, used bags lose their static protection properties.

This list serves as a reminder of the minimum acceptable practices. Be sure that all static discharge devices at the work bench are properly installed and maintained. Standard grounding mats and wrist straps purchased for use at work benches are supplied with leads having current limiting resistors for safety. Never substitute with a grounding lead not having the resistor.

### 5.0 UNPACKING AND RECEIVING INSPECTION

This item was thoroughly tested and carefully packed in the factory. Upon acceptance by the carrier, they assume responsibility for its safe arrival. Should you receive this item in a damaged condition, apparent or concealed, a claim for

**Table 8. Lens Dialog Screen**

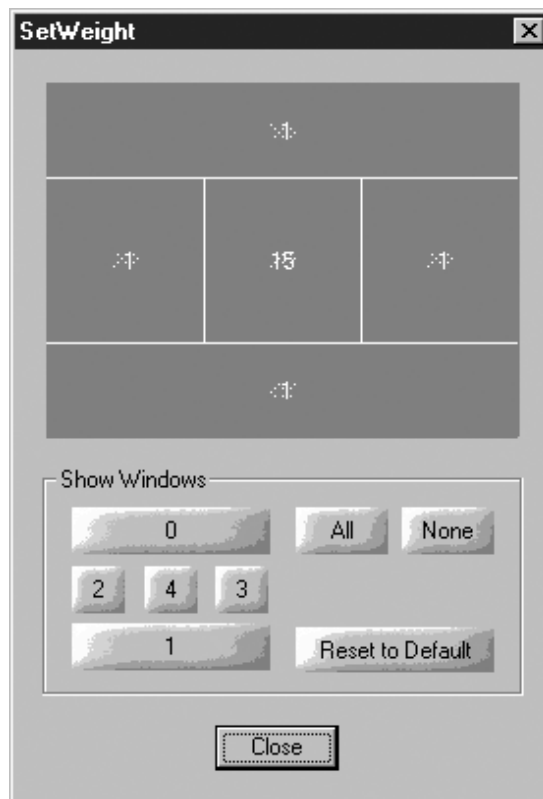
FUNCTION AREA		
NAME	EFFECT	
<b>Lens</b>		
Level	Setting range	Adjustment range from 109 to 149 (DC IRIS only)
DC Servo	For dc iris lens	Sets the dc iris drive stage for the lens being used
Video Servo	For auto / video iris lens	Sets the auto iris video drive stage for lens used
Manual	For manual iris lens	Level setting grayed out when in manual
<b>Aperture Correction</b>		
HAPGL	Horizontal Aperture Gain Low	0, 1, 2, & 3 available for selection
HAPGH	Horizontal Aperture Gain High	0, 1, 2, & 3 available for selection
VAPG	Vertical Aperture Gain	0, 1, 2, 3, 4, 5, 6, 7, 8, 9, 10, 11, 12, 13, 14, 15 available for selection
VHAPG	Vertical / Horizontal Aperture Gain	0, 16, 32, 48, 64, 80, 96, 112, 128, 144, 160, 176, 192, 208, 224, 240, & 255 available
<b>Close</b>		
Close	Click button	Closes the Lens Dialog window
<i>end</i>		



**Figure 14. Lens Dialog Screen**

**Table 9. Set Weight Screen**

FUNCTION AREA		
NAME	EFFECT	
<b>Show Windows</b>		
0	Physical locations of click buttons corresponds to corresponding window areas shown above	Click 0 to place this window into scene video
2		Click 2 to place this window into scene video
4		Click 4 to place this window into scene video
3		Click 3 to place this window into scene video
1		Click 1 to place this window into scene video
All	Show all windows in video	Click to place all windows into scene video
None	Show no window in video	Click to remove all windows from scene video
Reset to Default	Resets size and location of windows to the factory default	
<b>Close</b>		
Close	Click button	Click to close the window
<i>end</i>		



**Figure 15. Set Weight Screen**



damage must be made to the carrier.

To return the product to the factory for service, please contact the Customer Service Department for a Return Authorization Number. If a visual inspection shows damage upon receipt of this shipment, it must be noted on the freight bill or express receipt and the notation signed by the carrier's agent. Failure to do this can result in the carrier refusing to honor the claim.

When the damage is not apparent until the unit is unpacked, a claim for concealed damage must be made. Make a mail or phone request to the carrier for inspection immediately upon discovery of the concealed damage. Keep all cartons and packing materials.

Since shipping damage is the carrier's responsibility, the carrier will furnish you with an inspection report and the necessary forms for filing the concealed-damage claim

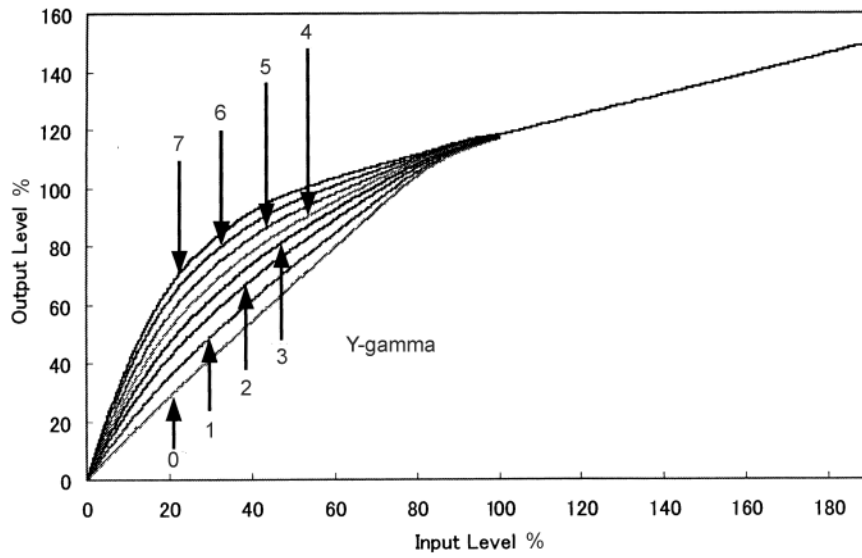
## **6.0 PREPARATION FOR SHIPMENT AND STORAGE**

For storage periods exceeding about one month, seal the unit in a vapor-proof bag containing a fresh desiccant pack.

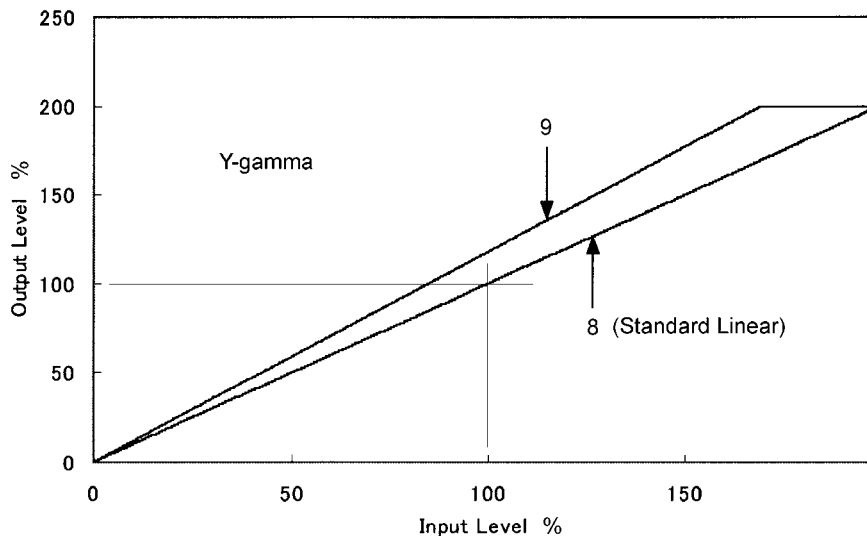
Maintain the Camera storage environment within a range of -30 to 85 °C (-22 to 185 °F).

For shipment, package with enough foam padding or other packing material to prevent damage that can occur during shipping. The original shipping carton is a good container if it has not been damaged or subjected to excessive moisture. Please contact the Customer Service Department for a Return Authorization (RA) number before sending any shipments to the factory.

Prominently display the RA number on the outside of the shipping container(s) and on paperwork contained inside. Give a brief description of why the equipment is being returned and list the symptoms of any problems being experienced with the equipment.



**Figure 17. Non-linear Y-gamma Characteristics**



**Figure 18. Linear Y-gamma Characteristics**

**7.0 WARRANTY**

Please refer to the Cohu website for product warranty information:

<http://www.cohu-cameras.com/warranty/WarrantyStatement.pdf>.

Revision History		
Revision	Date	Comments
C	4/28/11	This manual has been revised to comply with the latest engineering requirements. See ECO 030972 for the list of changes
D	6/22/12	The manual is revised to replace contact information with the link to a web page. See ECO 031305.